

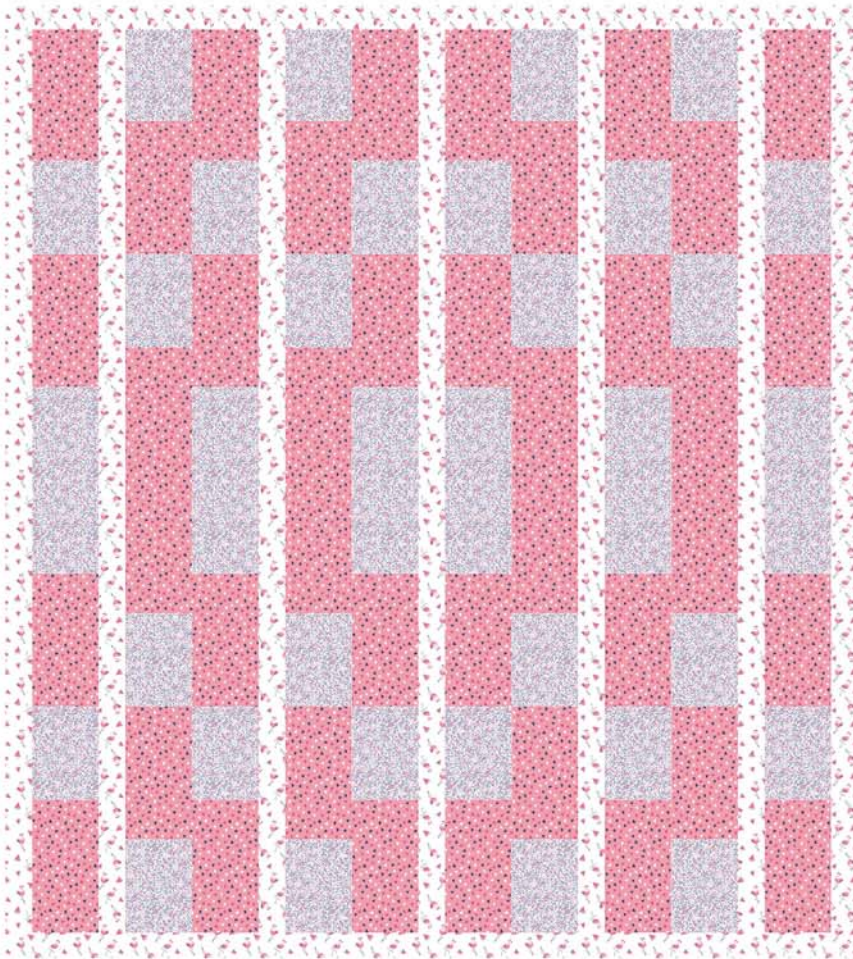
**FREE
PATTERN**

Freshly Made to bring your ideas to life.



Garden Party Quilt (Q-051) by Camelot Design Studio

Difficulty Level: Intermediate
Finished Size: 64" x 74"



LAURA ASHLEY

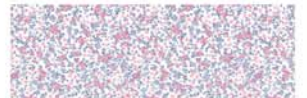


**Summer Days
COLLECTION**

Fabric requirements



Fabric A: 71190302 01
2-1/8 yards



Fabric B: 71190307 01
1-1/2 yards



Fabric C: 71190305 01
1-7/8 yards
(Including binding)



Suggested Backing
71190303 02
4 yards

Exclusive Quilt Design by Camelot Design Studio
The direction of the fabrics in the digital imagery may not be accurate to the final product
© Laura Ashley, Inc.

@CamelotFabrics @lauraashleyusa

@camelot_fabrics @lauraashleyusa

pinterest.com/camelotfabrics pinterest.com/lauraashleyusa

facebook.com/camelotfabrics facebook.com/LauraAshleyUS

www.lauraashleyusa.com

camelotfabrics.com | camelotfabricsblog.com

Toll-Free: 1-800-361-4120 | 514-382-2400

info@camelotfabrics.com

COLLECTION
Summer Days

OTHER TOOLS & SUPPLIES

- needle and coordinating thread
- sewing machine
- iron & pressing surface
- rotary cutter and mat
- fabric shears
- straight pins

NOTES

- For best results, read through all instructions before starting.
- Please wash, dry & iron your fabrics before beginning, and trim selvages.
- Unless otherwise indicated, sew all seams with a 1/4" seam allowance.
- Press your seams open as you go.
- WOF = width of fabric

CUTTING

Fabric A

Cut (13) 5-1/2" x WOF strips. Sub-cut into:

- (32) 10-1/2" x 5-1/2" rectangles. These will be referred to as piece (a).
- (4) 20-1/2" x 5-1/2" rectangles. These will be referred to as piece (b).

Fabric B

Cut (9) 5-1/2" x WOF strips. Sub-cut into:

- (28) 7-1/2" x 5-1/2" rectangles. These will be referred to as piece (c).
- (6) 14-1/2" x 5-1/2" rectangles. These will be referred to as piece (d).

Fabric C

Cut (25) 2-1/2" x WOF strips. Set aside (7) strips for Binding.

From the remaining strips:

- sew 2 strips together and trim to make a 74-1/2" strip. Repeat to make (7) 74-1/2" strips and (2) 64-1/2" strips.



PIECING (NOTE : Refer to diagram on p.3 for fabric placement)

For Columns 1, 3, 5, 6, 8, 10:

1. Sew together the following rectangles from top to bottom:
-(a), (c), (a), (d), (a), (c), (a).

For Columns 2, 4, 7, 9:

2. Sew together the following rectangles from top to bottom:
-(c), (a), (c), (b), (c), (a), (c).

ASSEMBLY

3. Sew all columns together from left to right while inserting one 74-1/2" x 2-1/2" Fabric C sashing strip in between the following columns:

1&2, 3&4, 5&6, 7&8, 9&10.

NOTE: For the columns that are sewn side by side without a sashing strip, make sure to line up your seams where necessary.

4. Sew one 74-1/2" x 2-1/2" Fabric C border strip to either side of the assembled quilt top.

5. Sew one 64-1/2" x 2-1/2" Fabric C border strip to top of the assembled quilt top and one to the bottom. This completes your quilt top.

FINISHING

6. Layer quilt top with batting and backing. Baste and quilt as desired.

7. Sew the Fabric C binding strips together end to end and press seams open. Bind the quilt using your favorite method.



Columns

